

valves

# CL18 & CL26 Series

ISO 15407-1, Solenoid Pilot Actuated Valves



# numatics®

# table of contents

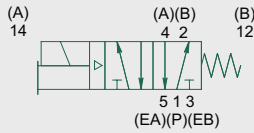


<b>CL18 &amp; CL26 Series</b> .....	3-13
Technical and Operating Data .....	3
How to Order .....	4
Valve Dimensions .....	5
Individual Base Dimensions .....	6-7
Manifold Dimensions .....	8-9
Regulator Service Kits and Parts .....	10
Sandwich Pressure Regulator Dimensions .....	10
Speed Control Kit .....	11
Blank Station Plate .....	11
Solenoid Assemblies .....	11
Service Kits and Parts .....	12-13

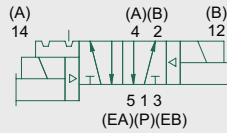


## CL18 & CL26 Series

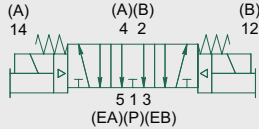
single solenoid  
2 position, 4-way



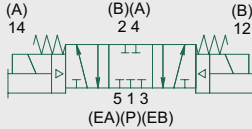
double solenoid  
2 position, 4-way



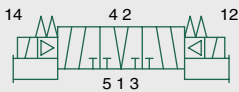
double solenoid  
3 position, 4-way  
open center



double solenoid  
3 position, 4-way  
closed center



double solenoid pilot  
3 Position 4-Way (5/3),  
open to 4 (A) and  
2 (B) in center



- 5 Ported, 2 and 3 position, 4-way, Spool & Sleeve
- Cv: 0.7-1.0
- Solenoid air pilot actuated
- Housing made from anodized aluminum alloy
- Lubricated or non-lubricated operation
- AC or DC
- Industry standard type 17 mm (9.4 mm) Connector
- Several types of manual overrides
- NEMA 4/IP65
- Conforms to ISO15407-1

## Technical Data

VALVE DATA	ENGLISH	METRIC
CL18 Cv	0.7	700 NI/min
CL26 Cv	1.0	1000 NI/min
Flow Capacity - CL18	32 SCFM @ 80 PSIG upstream pressure to atmosphere	26 NI/m @ 6 bar upstream to 5 bar downstream
Flow Capacity - CL26	46 SCFM @ 80 PSIG upstream pressure to atmosphere	37 NI/m @ 6 bar upstream to 5 bar downstream
Operating Pressure Range	28" Hg. Vacuum to 150 PSIG	Vacuum to 16 bar
Pilot Pressure Range	26.1 to 145 PSIG	1.8 to 10 bar
Temperature Range (Ambient)	-4°F to +176°F	-20°C to +80°C

## Operating Data

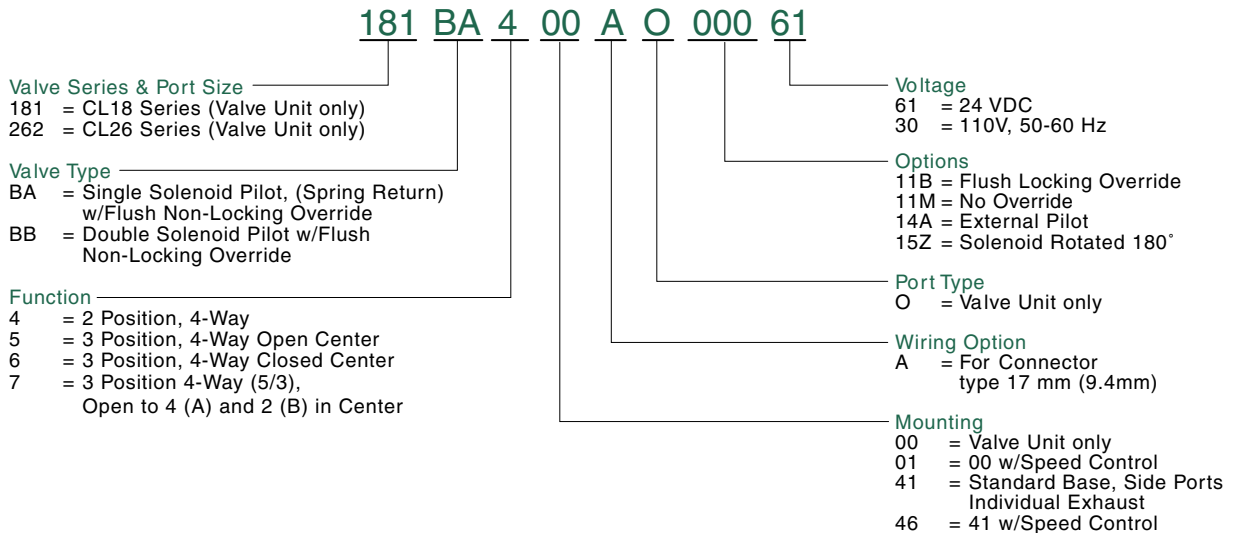
ALL SOLENOIDS ARE CONTINUOUS DUTY RATED	24 VDC	115 / 50 Hz.	120 / 60 Hz.	
Power (Watts)	1.89	4.15	3.80	
Holding Current (Amps)	0.079	0.04	0.038	
RESPONSE TIME IN SECONDS	ENERGIZE	DE-ENERGIZE	ENERGIZE	DE-ENERGIZE
CL18 2-Position, Single, Spring Return	0.012	0.028	0.010	0.032
CL18 2-Position, Double, Detented	0.010	0.010	0.010	0.010
CL18 3-Position, Spring Centered	0.010	0.028	0.010	0.032
CL26 2-Position, Single, Spring Return	0.013	0.029	0.011	0.033
CL26 2-Position, Double, Detented	0.011	0.011	0.011	0.011
CL26 3-Position, Spring Centered	0.011	0.029	0.011	0.033



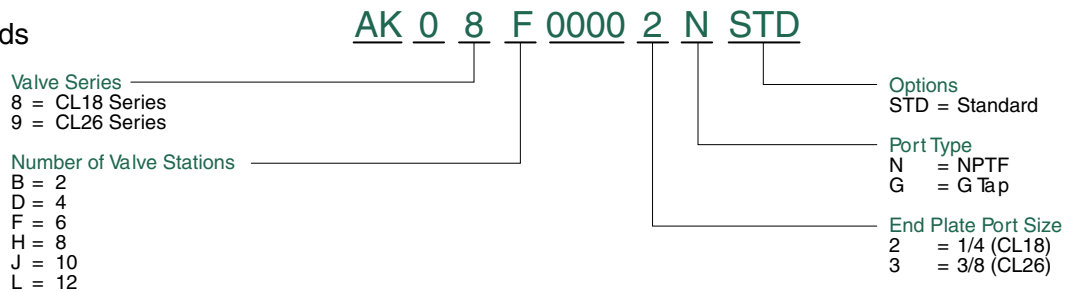
## CL18 & CL26 Series

### How to Order

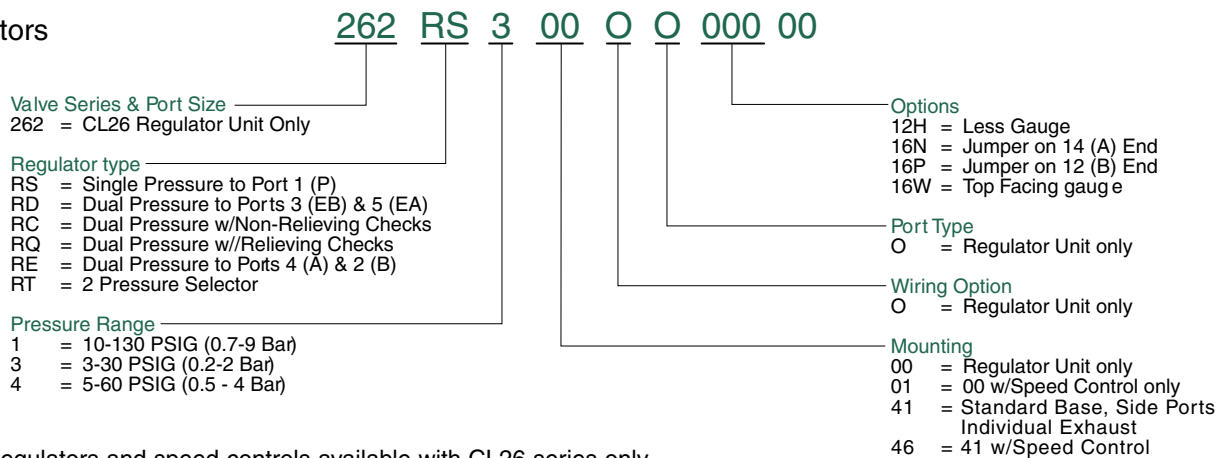
#### Valves



#### Manifolds

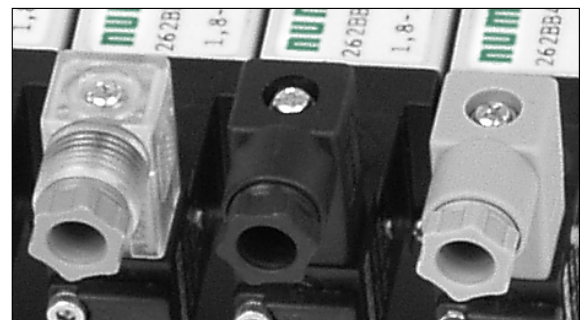


#### Regulators



NOTE: Regulators and speed controls available with CL26 series only.

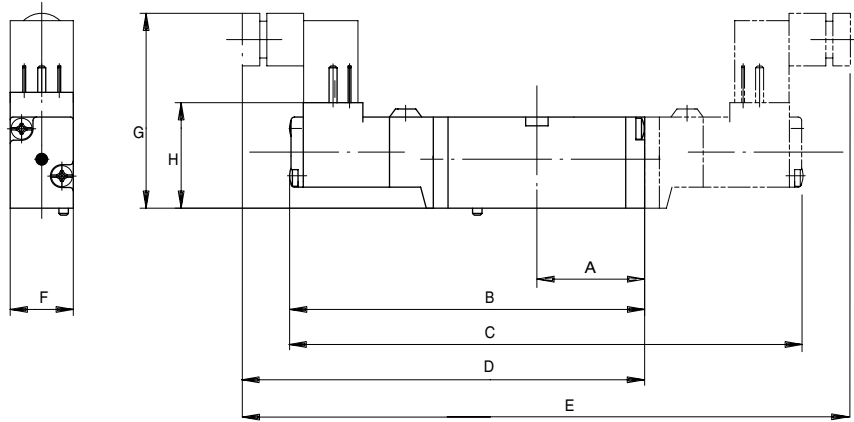
PLUG CONNECTOR DESCRIPTION	PART NO.
Grey (14 end solenoid) Plug Assembly w/o Light	230-1089
Black (12 end solenoid) Plug Assembly w/o Light	230-1090
Plug Assembly, 24 VDC w/ Light	230-1091
Plug Assembly, 24 VDC w/ Light & Diode	230-1092
Plug Assembly, 120 VAC w/ Light	230-1093
Plug Assembly, 120 VAC w/ Light & MOV	230-1094





## CL18 & CL26 Series

### CL18 Sub-Base Mounted Valve, Connector Type 17mm (9.4mm)

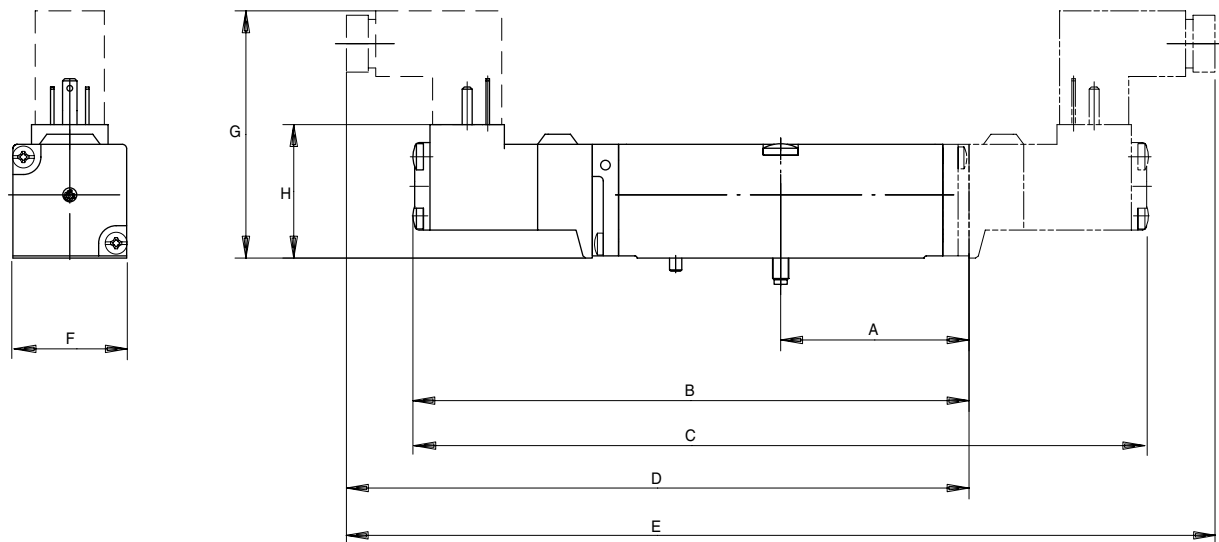


#### Dimensions

top dimensions = inches  
bottom dimensions (in parenthesis) = millimeters

A	B	C	D	E	F	G	H
1.22	3.98	5.55	4.63	6.83	0.71	2.19	1.18
(31.0)	(101.0)	(141.0)	(117.5)	(173.5)	(18.0)	(55.5)	(30.0)

### CL26 Sub-Base Mounted Valve, Connector Type 17mm (9.4mm)



#### Dimensions

top dimensions = inches  
bottom dimensions (in parenthesis) = millimeters

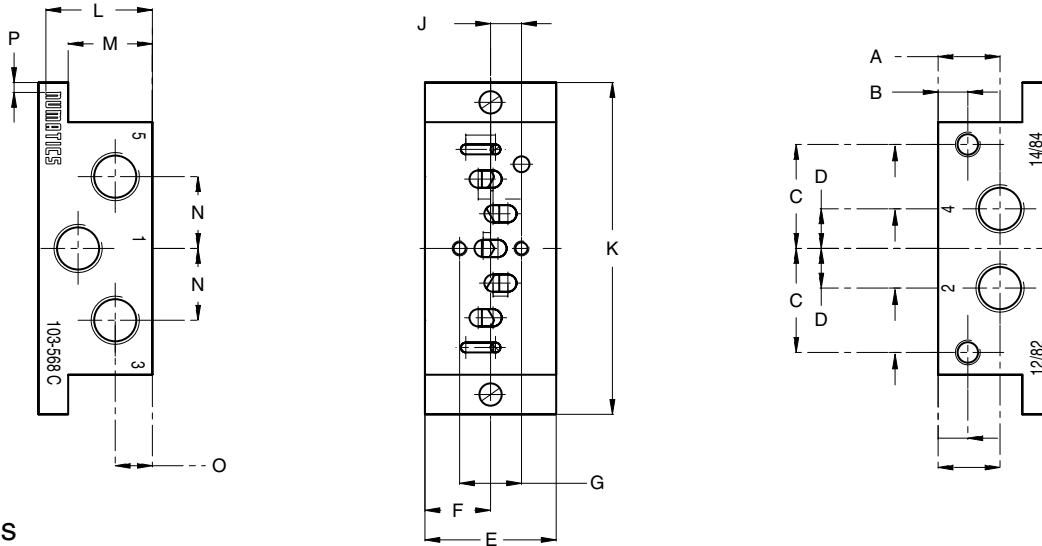
A	B	C	D	E	F	G	H
1.69	5.00	6.62	5.60	7.81	1.02	2.22	1.20
(43.0)	(127.1)	(168.1)	(142.3)	(198.5)	(26.0)	(56.5)	(30.5)



## CL18 & CL26 Series

### CL18 1/8 NPTF Individual Base

103-568



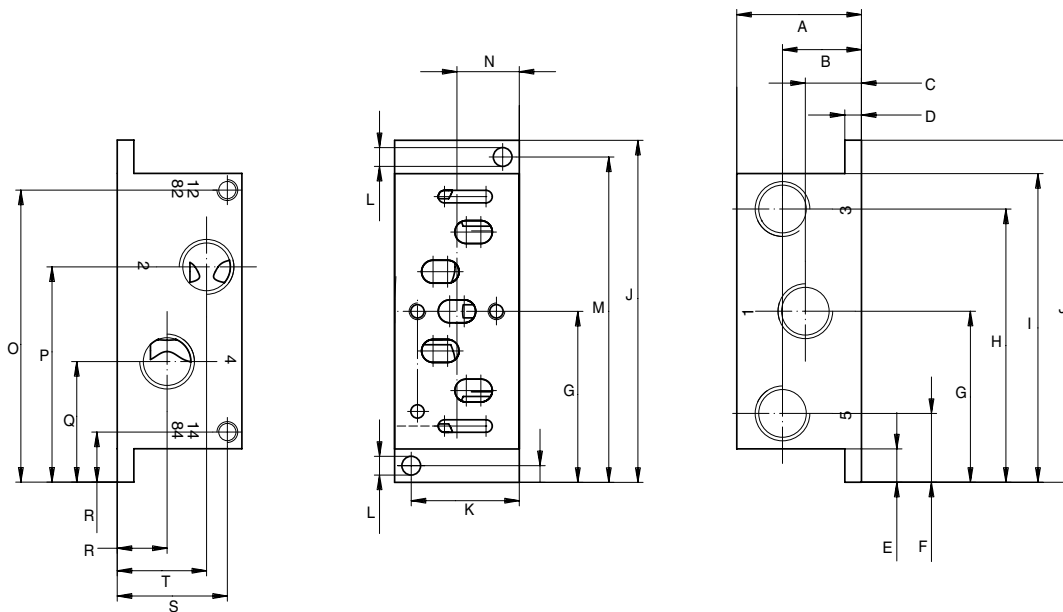
#### Dimensions

top dimensions = inches  
bottom dimensions (in parenthesis) = millimeters

A	B	C	D	E	F	G	J	K	L	M	N	O	P
0.49	0.24	0.83	0.31	1.04	0.52	0.49	0.25	2.64	0.85	0.67	0.57	0.30	0.08
(12.5)	(6.0)	(21.0)	(8.0)	(26.5)	(13.3)	(12.5)	(6.3)	(67.0)	(21.5)	(17.0)	(14.5)	(7.5)	(2.0)

### CL26 1/4 NPTF Individual Base

103-576



#### Dimensions

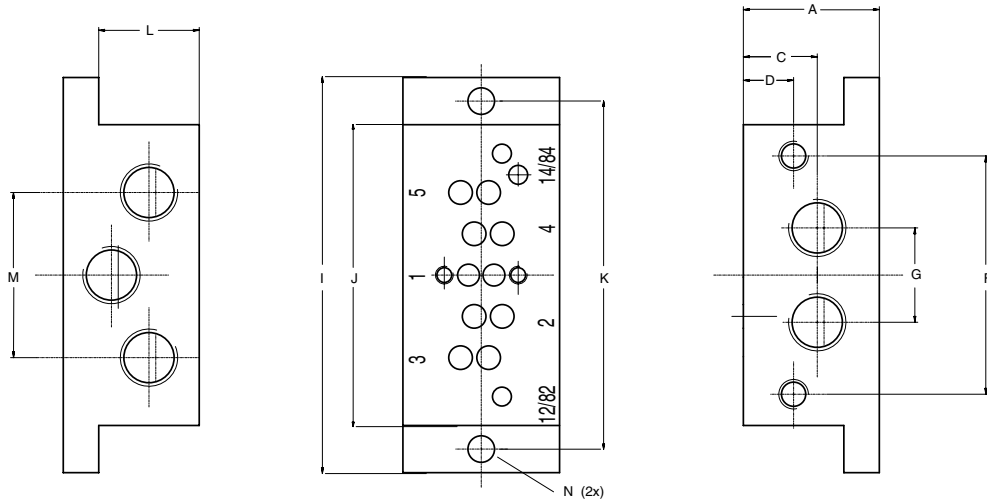
top dimensions = inches  
bottom dimensions (in parenthesis) = millimeters

A	B	C	D	E	F	G	H	I	J	K	L	M	N	O	P	Q	R	S	T
1.18	0.75	0.53	0.16	0.31	0.65	1.61	2.58	2.91	3.23	1.02	0.18	3.07	0.20	2.76	2.03	1.14	0.47	1.04	0.85
(30.0)	(19.0)	(13.5)	(4.0)	(8.0)	(16.5)	(41.0)	(65.5)	(74.0)	(82.0)	(26.0)	(4.5)	(78.0)	(5.0)	(70.0)	(51.6)	(28.9)	(12.0)	(26.5)	(21.5)



### CL18 1/8 G-Tap Base

103-562



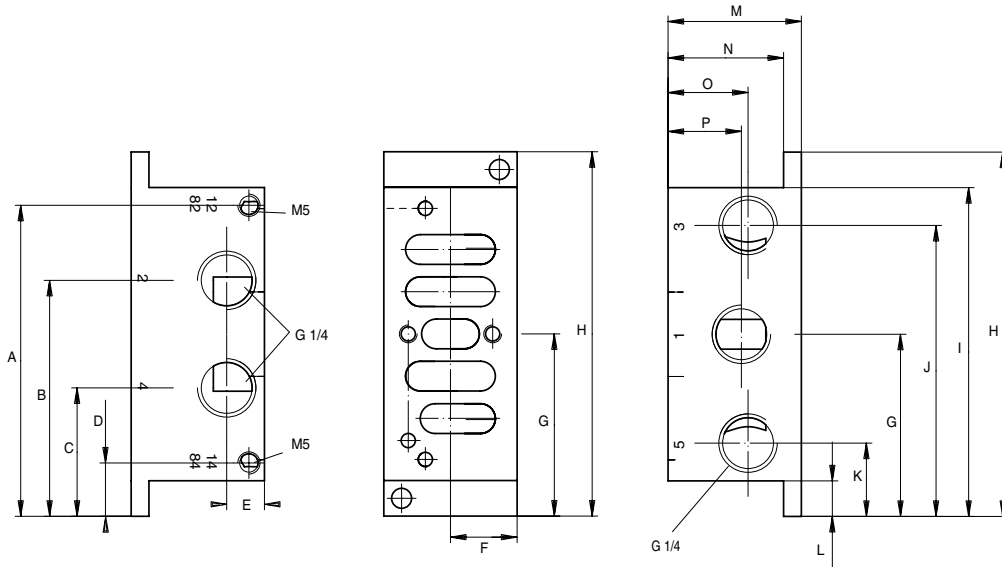
#### Dimensions

top dimensions = inches  
bottom dimensions (in parenthesis) = millimeters

A	C	D	F	G	H	I	J	K	L	M	N
0.90 (23.0)	0.49 (12.5)	0.33 (8.5)	1.59 (40.4)	0.63 (16.0)	1.04 (26.5)	2.64 (67.0)	2.01 (51.0)	2.32 (59.0)	0.67 (17.0)	1.10 (28.0)	0.18 (4.5)

### CL26 1/4 G-Tap Base

103-563



#### Dimensions

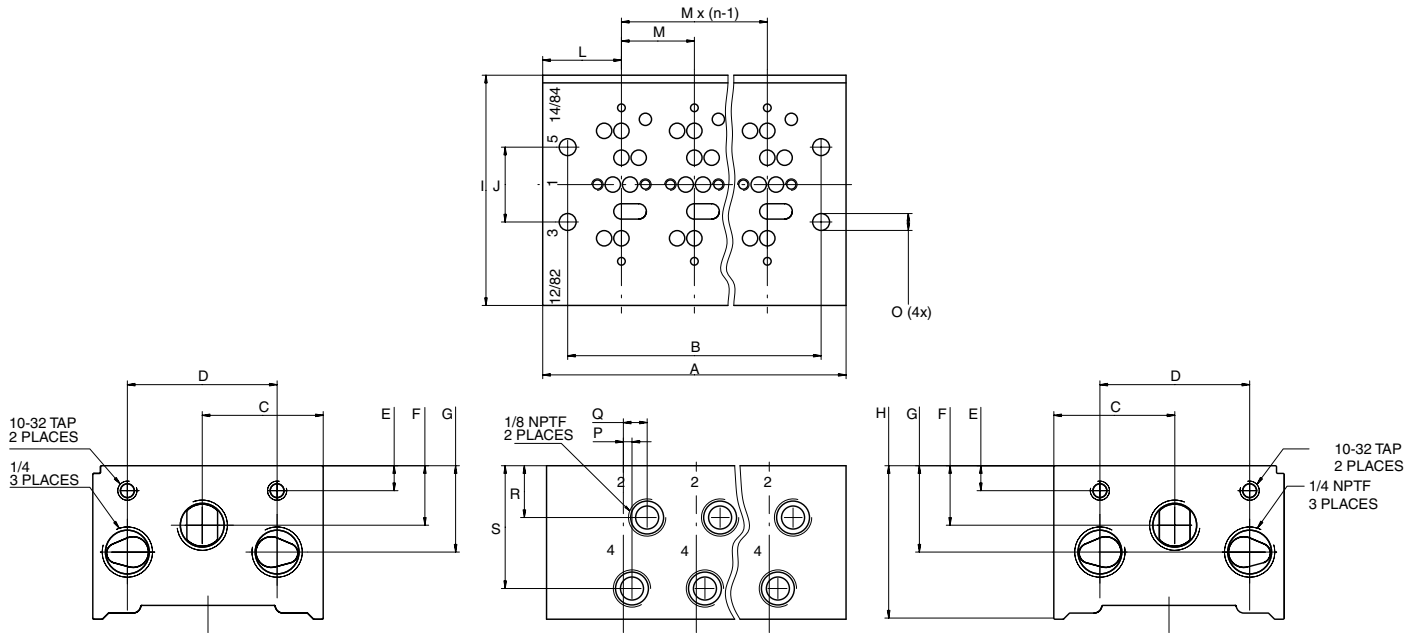
top dimensions = inches  
bottom dimensions (in parenthesis) = millimeters

A	B	C	D	E	F	G	H	I	J	K	L	M	N	O	P
2.76 (70.0)	2.09 (53.1)	1.14 (28.9)	0.47 (12.0)	0.33 (8.5)	0.59 (15.0)	1.61 (41.0)	3.23 (82.0)	2.91 (74.0)	2.58 (65.5)	0.65 (16.5)	0.31 (8.0)	1.18 (30.0)	1.02 (26.0)	0.71 (18.0)	0.65 (16.5)



## CL18 & CL26 Series

### CL18 Manifold with 1/8 NPTF Side Ports



### Dimensions

top dimensions = inches  
bottom dimensions (in parenthesis) = millimeters

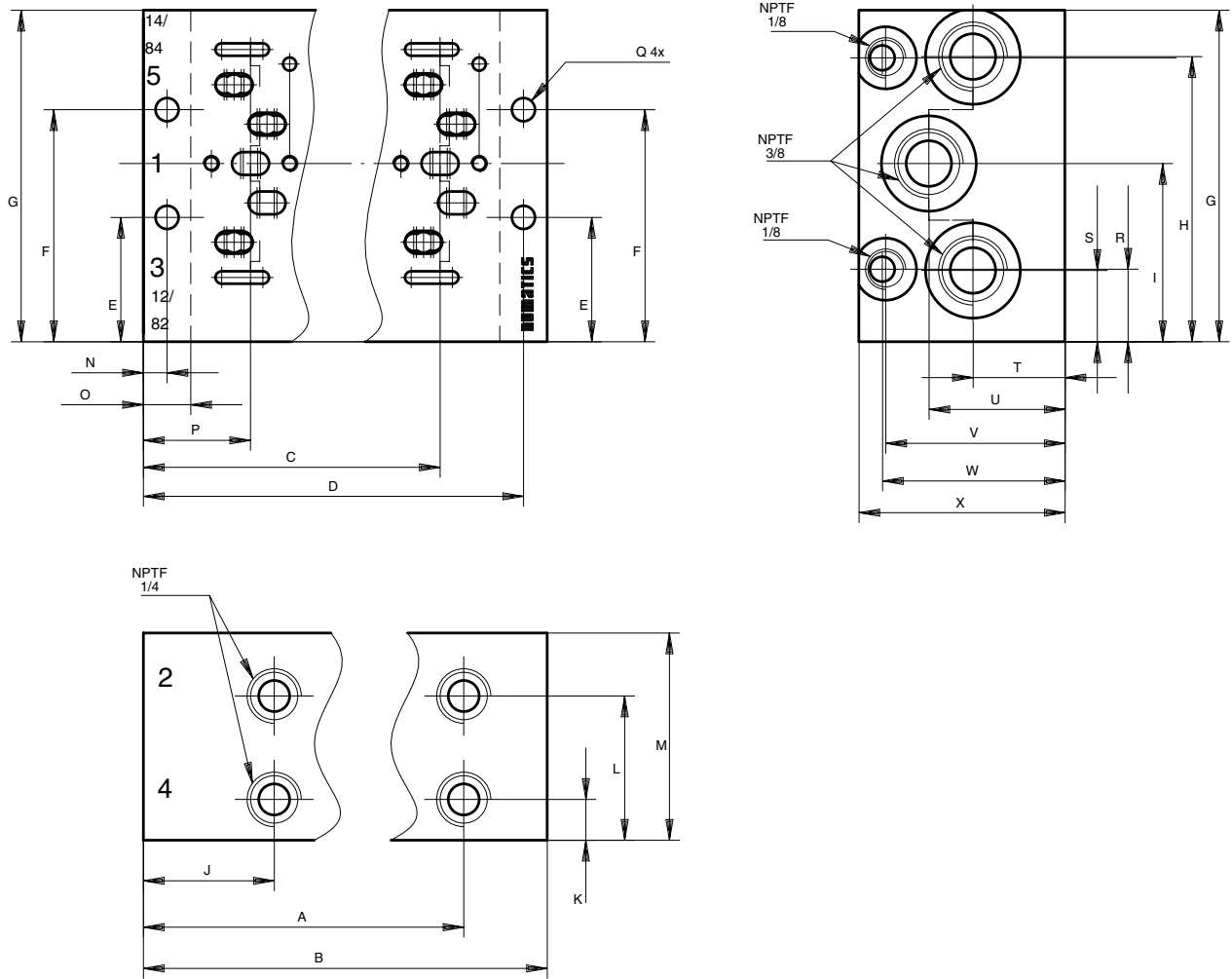
STATIONS	PART NO. 1/4 NPTF	PART NO. G 1/4	A	B	C	D	WEIGHT APPROX. (lbs)
2	106-1186	106-740	2.36 (60.0)	1.85 (47.0)	1.24 (31.5)	1.54 (39.0)	0.701
4	106-1188	106-742	3.86 (98.0)	3.35 (85.0)	1.24 (31.5)	1.54 (39.0)	1.168
6	106-1190	106-744	5.35 (136.0)	4.84 (123.0)	1.24 (31.5)	1.54 (39.0)	1.596
8	106-1192	106-746	6.85 (174.0)	6.34 (161.0)	1.24 (31.5)	1.54 (39.0)	2.103
10	106-1194	106-748	8.35 (212.0)	7.83 (199.0)	1.24 (31.5)	1.54 (39.0)	2.571
12	106-1195	106-749	9.84 (250.0)	9.33 (237.0)	1.24 (31.5)	1.54 (39.0)	3.038

E	F	G	H	I	J	L	M	O	P	Q	R	S
0.26 (6.5)	0.61 (15.5)	0.93 (23.5)	1.57 (40.0)	2.36 (60.0)	0.77 (19.5)	0.81 (20.5)	0.75 (19.0)	0.17 (4.4)	0.09 (2.3)	0.24 (6.2)	0.53 (13.5)	1.26 (32.0)





### CL26 Manifold with 1/4 NPTF Side Ports



### Dimensions

top dimensions = inches  
bottom dimensions (in parenthesis) = millimeters

STATIONS	PART NO. 1/4 NPTF	PART NO. G 1/4	A	B	C	D	E	F	G	H	WEIGHT APPROX. (lbs)
2	106-1313	106-1135	2.31 (58.8)	3.11 (79.0)	2.09 (53.0)	2.89 (73.3)	1.18 (30.0)	2.20 (56.0)	3.15 (80.0)	2.71 (68.8)	1.986
4	106-1315	106-1137	4.44 (112.8)	5.24 (133.0)	4.21 (107.0)	5.01 (127.3)	1.18 (30.0)	2.20 (56.0)	3.15 (80.0)	2.71 (68.8)	3.342
6	106-1317	106-1139	6.57 (166.8)	7.36 (187.0)	6.34 (161.0)	7.14 (181.3)	1.18 (30.0)	2.20 (56.0)	3.15 (80.0)	2.71 (68.8)	4.700
8	106-1319	106-1141	8.69 (220.8)	9.49 (241.0)	8.46 (215.0)	9.26 (235.3)	1.18 (30.0)	2.20 (56.0)	3.15 (80.0)	2.71 (68.8)	6.056
10	106-1321	106-1143	10.82 (274.8)	11.61 (295.0)	10.59 (269.0)	11.39 (289.3)	1.18 (30.0)	2.20 (56.0)	3.15 (80.0)	2.71 (68.8)	7.414
12	106-1323	106-1145	12.94 (328.8)	13.74 (349.0)	12.72 (323.0)	13.52 (343.3)	1.18 (30.0)	2.20 (56.0)	3.15 (80.0)	2.71 (68.8)	8.772

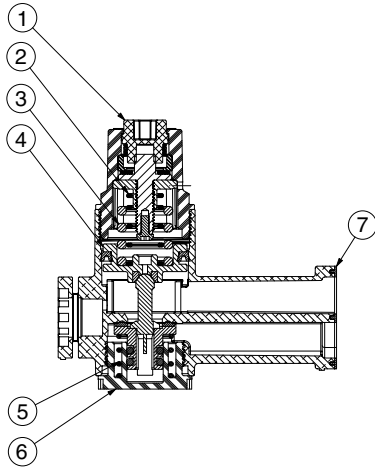
I	J	K	L	M	N	O	P	Q	R	S	T	U	V	W	X
1.69 (43.0)	1.25 (31.8)	0.39 (9.9)	1.37 (34.8)	1.97 (50.0)	0.23 (5.8)	0.45 (11.5)	1.02 (26.0)	0.22 (5.6)	0.69 (17.5)	0.68 (17.2)	0.88 (22.3)	1.30 (33.0)	1.71 (43.5)	1.74 (44.3)	1.97 (50.0)



## CL18 & CL26 Series

### Regulator Kits & Service Parts Regulator Service Kit

239-1393

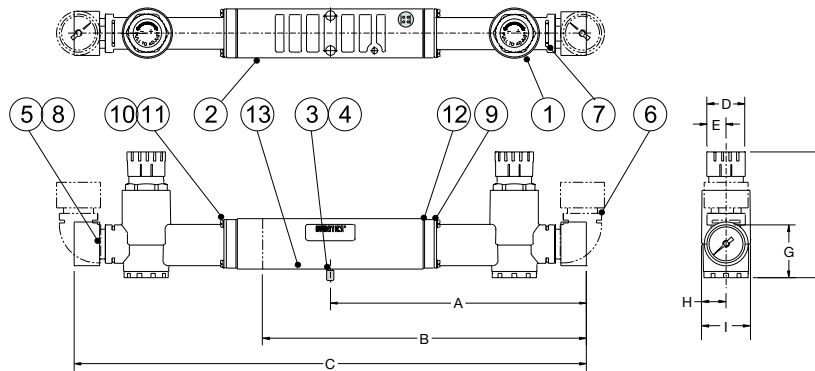


### Regulator Unit Kits (includes regulator assembly, gaskets, screws)

PSIG	PART NO.
3-30 PSIG	239-1386
5-60 PSIG	239-1387
10-130 PSIG	239-1388

DET. NO.	NO. REQ'D	PART NAME
1	1	Bonnet
2	1	Spring
3	1	Spring
4	1	Piston Assembly
5	1	Spring
6	1	Cap
7	1	Gasket

### Sandwich Pressure Regulator



#### Dimensions

top dimensions = inches  
bottom dimensions (in parenthesis) = millimeters

A	B	C	D	E	F	G
5.48 (139.2)	6.94 (176.3)	10.97 (278.6)	0.81 (20.6)	0.41 (10.4)	2.7 (68.6)	1.14 (29.0)
H	I					
0.52 (13.2)	1.04 (26.4)					

Note: Regulators and speed controls available with CL26 series only.

#### Parts List

DET. NO.	NO. REQ'D	PART NAME	PART NO.
1	2*	Regulator	see above
2	1	Single riser block	125-798
2	1	Double riser block	125-799
3	2	O-Ring	126-528
4	2	Stud	125-812
5	2*	Gauge 160 PSI max.	214-212
5	2*	Gauge 11 bar max.	214-213
5	2*	Gauge 60 PSI max.	214-217
5	2*	Gauge 4 bar max.	214-218
6	2*	Elbow	134-505
7	4**	Pin	131-236
8	4**	O-Ring	126-105
9	2*	Clamp	138-181
10	8***	Screw	127-377
11	8***	Lockwasher	128-172
12	2*	Gasket	113-535
13	1	Gasket	113-534

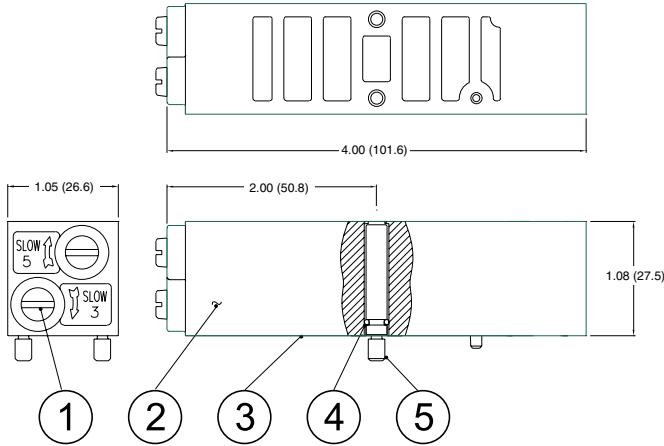
\* (1) Required for RS  
\*\* (2) Required for RS  
\*\*\* (4) Required for RS



## CL18 & CL26 Series

### Speed Control Kit

239-2099



#### Parts List

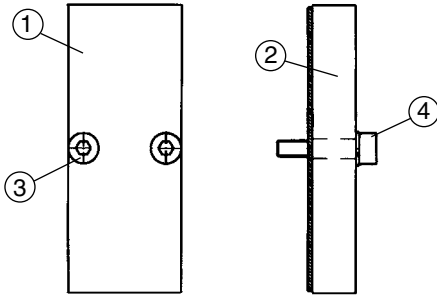
DET. NO.	NO. REQ'D	PART NAME	PART NO.
1	2	Metering Screw	118-178
Not Shown	2	Nylon Rod	125-131
2	1	Speed Control Body	119-632
3	1	Gasket	113-534
4	2	O-Ring	126-528
5	2	Stud	125-812

Note: Regulators and speed controls available with CL26 series only.

### Blank Station Plate

CL18  
CL26

239-478  
239-501



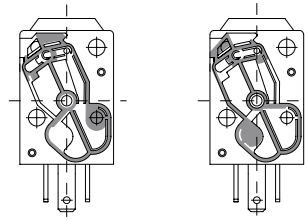
#### Parts List

DET. NO.	NO. REQ'D	PART NAME	CL18 PART NO.	CL26 PART NO.
1	1	Blank Station Plate	119-315	119-323
2	1	Gasket	113-513	113-358
3	2	Screw	127-513	127-400
4	2	Lockwasher	128-192	128-188

### Solenoid Assemblies- CL18 & CL26

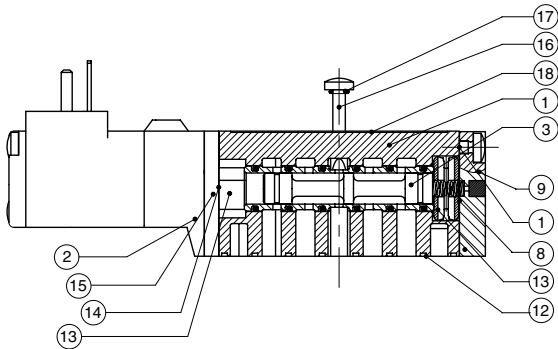
	AC 110V/50-60 Hz	DC 24 VDC
Solenoid w/Flush Non-Locking Manual Override	228-778	225-356
Solenoid w/o Manual Override	228-788	225-473
Solenoid w/Flush Locking Manual Override	228-781	225-362

### Internal/External Pilot Selection

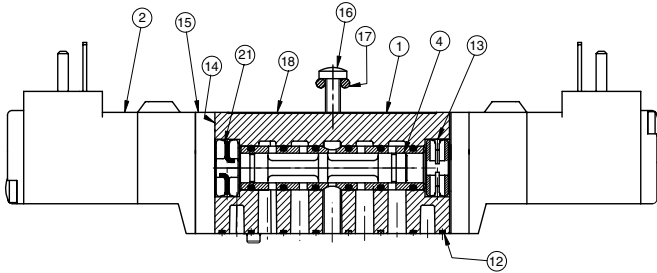


### CL18 Service Kits and Parts

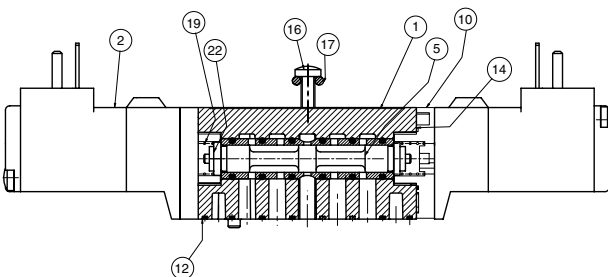
Kit No. CL18-K1 (For Model 181BA4)



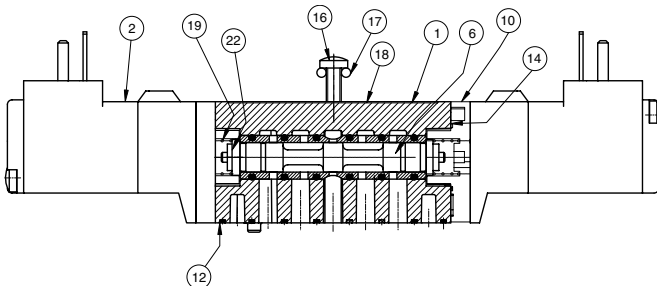
Kit No. CL18-K2 (For Model 181BB4)



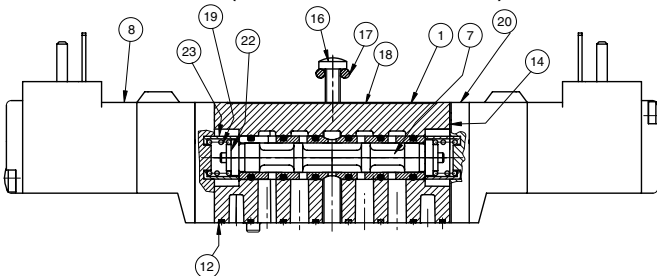
Kit No. CL18-K3 (For Models 181BB5)



Kit No. CL18-K3 (For Models 181BB6)



Kit No. CL18-K3 (For Models 181BB7)



### Parts List

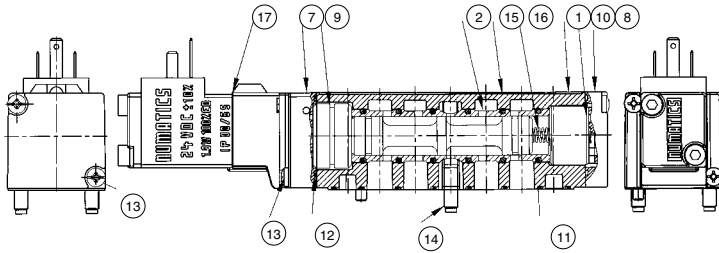
DET NO.	NO REQ'D					PART NAME	PART NO.
	BA4	BB4	BB5	BB6	BB7		
1	1	1	1	1	1	Valve Body (not sold separately)	
2	1	2	2	2	2	Solenoid Assembly	See p. 11
3	1	N/A	N/A	N/A	N/A	Spool/Sleeve Assembly	209-512
4	N/A	1	N/A	N/A	N/A	Spool/Sleeve Assembly	209-513
5	N/A	N/A	1	N/A	N/A	Spool/Sleeve Assembly	209-514
6	N/A	N/A	N/A	1	N/A	Spool/Sleeve Assembly	209-515
7	N/A	N/A	N/A	N/A	1	Spool/Sleeve Assembly	209-516
8	1*	N/A	N/A	N/A	N/A	Return Spring	115-263
9	1	N/A	N/A	N/A	N/A	Spring Cap Assembly	204-424
10	N/A	N/A	2	2	N/A	Adaptor Plate	119-570
11	2	N/A	N/A	N/A	N/A	Screw	127-657
12	1*	1*	1*	1*	1*	Gasket body/manifold	113-346
13	2*	1*	N/A	N/A	N/A	Detent Body	110-117
14	1*	2*	2*	2*	2*	Gasket adaptor/body	113-347
15	1	2	N/A	N/A	N/A	Adaptor Plate	119-309
16	2	2	2	2	2	Mounting Screw	127-821
17	2*	2*	2*	2*	2*	O-Ring	126-412
18	1	1	1	1	1	Nameplate	122-803
19	N/A	N/A	2*	2*	2*	Spring 1.8 bar (std) or 1.0 bar	115-266 115-376
20	N/A	N/A	N/A	N/A	2	Adaptor Plate	119-558
21	N/A	1*	N/A	N/A	N/A	Detent Assembly	210-122
22	N/A	N/A	2	2	2	Spring Retainer	116-386
23	N/A	N/A	N/A	N/A	2	Bushing	116-385

\*Indicates parts included in kits.

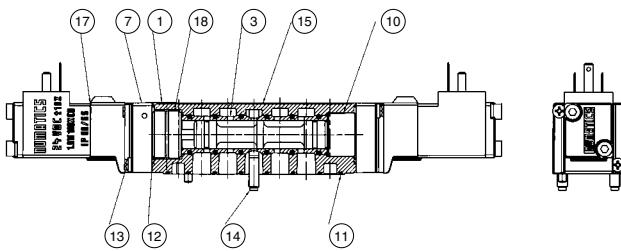


### CL26 Service Kits and Parts

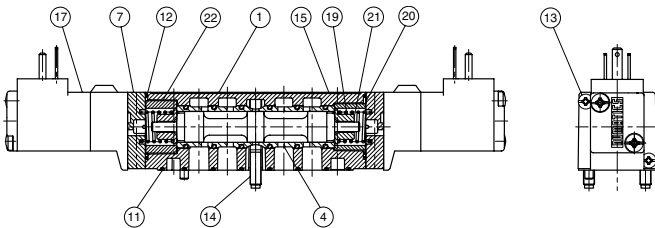
Kit No. CL26-K1 (For Models 262BA4)



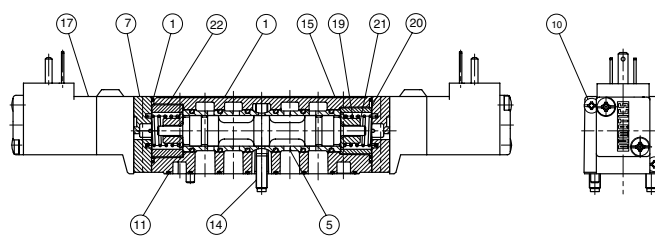
Kit No. CL26-K2 (For Models 262BB4)



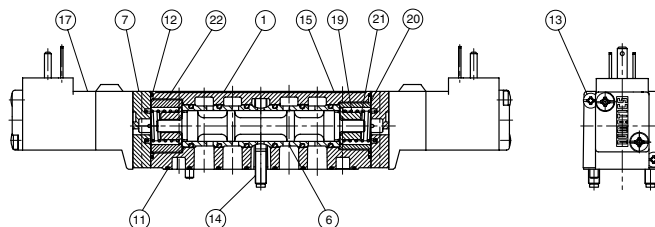
Kit No. CL26-K3 (For Models 262BB5)



Kit No. CL26-K3 (For Models 262BB6)



Kit No. CL26-K3 (For Models 262BB7)



### Parts List

DET NO.	NO REQ'D					PART NAME	PART NO.
	BA4	BB4	BB5	BB6	BB7		
1	1	1	1	1	1	Valve Body (not sold separately)	
2	1	N/A	N/A	N/A	N/A	Spool/Sleeve Assembly	209-517
3	N/A	1	N/A	N/A	N/A	Spool/Sleeve Assembly	209-518
4	N/A	N/A	1	N/A	N/A	Spool/Sleeve Assembly	209-519
5	N/A	N/A	N/A	1	N/A	Spool/Sleeve Assembly	209-520
6	N/A	N/A	N/A	N/A	1	Spool/Sleeve Assembly	209-521
7	1	2	2	2	2	Adaptor Assembly	219-270
8	1	N/A	N/A	N/A	N/A	Spring Cap Assembly	204-425
9	1*	N/A	N/A	N/A	N/A	Detent Body	110-114
10	1*	1*	N/A	N/A	N/A	Bumper	116-306
11	1*	1*	1*	1*	1*	Gasket body/manifold	113-357
12	1*	2*	2*	2*	2*	Gasket adaptor/body	113-356
13	4	4	4	4	4	Screw	127-919
14	2	2	2	2	2	Mounting Screw Ass'y**	213-459
15	1	1	1	1	1	Nameplate	122-999
16	1*	N/A	N/A	N/A	N/A	Spring Return	115-271
17	1	2	2	2	2	Solenoid Assembly	See pg. 11
18	N/A	1*	N/A	N/A	2	Detent Assembly	210-118
19	N/A	N/A	2*	2*	2*	Spring	115-277
20	N/A	N/A	1	1	1	Bushing	117-170
21	N/A	N/A	2	2	2	Spring Retainer	116-464
22	1	N/A	1	1	1	Bushing	117-171

\*Indicates parts included in kits.

\*\*Mounting screw assembly includes Mounting Screw 127-745 and O-Ring 126-163.

# NUMATICS®

World Class Supplier  
of Pneumatic Components



## World Headquarters

### Numatics Incorporated

Phone: 248-887-4111  
Fax: 248-887-9190

## UNITED STATES

### Numatics – Air Preparation

Phone: 810-667-3900  
Fax: 810-667-3902

### Numatics – Valves

Phone: 248-887-4111  
Fax: 248-887-9190

### Numatics – Miniature Valves

Phone: 248-960-1400  
Fax: 248-960-2160

### Numatics – Cylinders

Phone: 615-771-1200  
Fax: 615-771-1201

### Numatics – Rodless Cylinders

Phone: 519-452-1777  
Fax: 519-452-3995

### Numatics – Automation

Phone: 440-934-3200  
Fax: 440-934-2288

## CANADA

### Ontario

Numatics, Ltd.  
Phone: 519-452-1777  
Fax: 519-452-3995

### Quebec

Numatics, Ltd.  
Phone: 514-332-6444  
Fax: 514-332-9273

### British Columbia

Numatics, Ltd.  
Phone: 604-574-0401  
Fax: 604-574-3713

## EUROPE

### Germany – European Headquarters

Numatics GmbH  
Phone: 011-49-22 41-31 60-0  
Fax: 011-49-22 41-31 60 40

### Hungary

Numatics Kft.  
Phone: 011-36-13 82 21 35  
Fax: 011-36-12 04 39 47

## EUROPE

### England

Numatics Limited  
Phone: 011-44-1525-37 07 35  
Fax: 011-44-1525-38 25 67

### France

Numatics s.a.r.l.  
Phone: 011-33-1 41 21 48 88  
Fax: 011-33-1 41 21 48 89

### Italy

Numatics srl  
Phone: 011-39-030-373 19 99  
Fax: 011-39-030-373 19 81

### Netherlands

Numatics B.V.  
Phone: 011-31-418-65 29 50  
Fax: 011-31-418-65 29 43

### Spain

Numatics Spain S.L.  
Phone: 011-34-93-221 21 96  
Fax: 011-34-93-221 35 14

## AFRICA

### South Africa

Numatics SA (Pty) Ltd.  
Phone: 011-27-11-8 65 44 52  
Fax: 011-27-11-8 65 42 90

## LATIN & SOUTH AMERICA

### Mexico

Numatics de Mexico S.A. de C.V.  
Phone: 011-52-222-284 6176  
Fax: 011-52-222-284 6179

### Brazil

Valvair Comercial Ltda.  
Phone: 011-55-12-351 2874  
Fax: 011-55-12-351 1958

## ASIA & PACIFIC

### Australia

Numatics Australia Pty. Ltd.  
Phone: 011-61-3-95 63 86 00  
Fax: 011-61-3-95 63 85 11

### Taiwan – Asian Headquarters

Numatics Co, Ltd. Asia  
Phone: 011-886-2-29 15 16 05  
Fax: 011-886-2-29 14 18 97

For a comprehensive listing of all Numatics production and distribution facilities worldwide, visit [www.numatics.com](http://www.numatics.com)